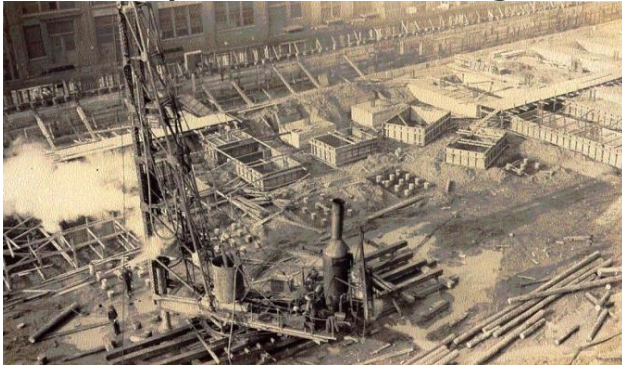




Working Wonders in Wood
Real Wood.
Real Stories.

MissionBell
reclaimed

The Story: Transbay Terminal Douglas Fir



San Francisco's Transbay Terminal was completed in 1939 at First and Mission for East Bay trains using the newly opened Bay Bridge. Designed to handle as many as 35 million people annually, the Terminal boasted ten car trains that arrived every 63.5 seconds. In its heyday, the Terminal's rail system served 26 million passengers annually. After the war ended and gas rationing was eliminated, the Terminal's use began to steadily decline to a rate of four to five million per year. In 1958, the lower deck of the Bay Bridge was converted to automobile traffic only; the Key System was dismantled and by 1959 the intermodal Transbay Terminal was converted into a bus-only facility.

In 2008, a completely new Transbay Terminal complex broke ground and the foundation pilings from the original Terminal were unearthed. The pilings consisted of 40' long Douglas Fir logs that were driven into the ground by a steam powered pile driver. Mission Bell is pleased to make the beautiful Reclaimed Douglas Fir available for new projects. The logs have weathered exterior, tight knots, some have slight green/blue/grey mineral coloration, and all are available from existing logs to fresh lumber.



FSC® Recycled 100%
Material #: TB-DF – Transbay Terminal Douglas Fir (*Pseudotsuga menaiesil*)