

Reclaimed Transbay Terminal Douglas Fir



www.mbreclaimed.com



Douglas Fir

The Transbay Terminal was originally built in 1937 as the terminal for East Bay trains using the Bay Bridge. A steam powered pile driver was used to insert hundreds of these 40' Fir logs into the ground for the foundation.

Source: Transbay Terminal, San Francisco

Prior Use: Pilings for original Transbay Terminal Foundation

Species: Douglas Fir
(*Pseudotsuga menziesii*)

Certified: FSC® Recycled 100%

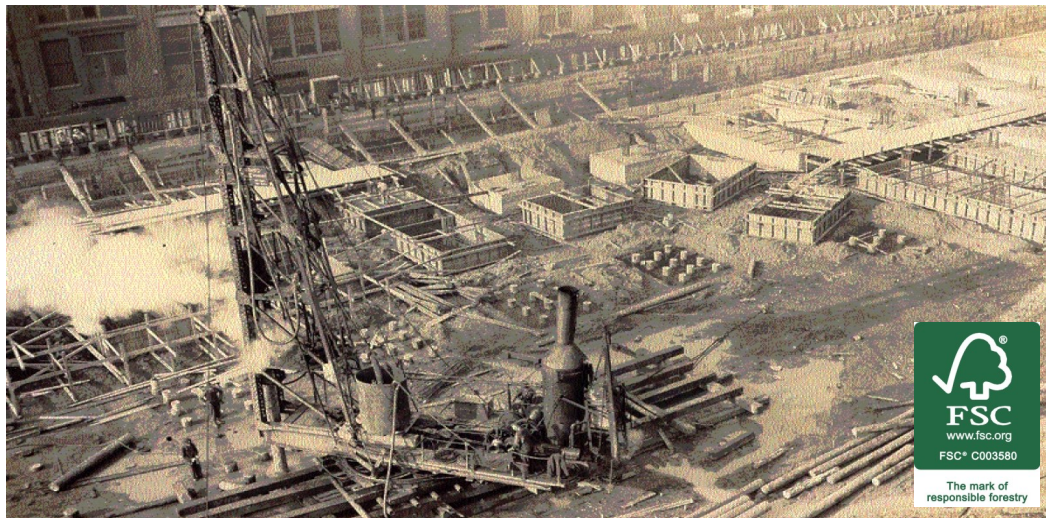
Character: Knots, natural Douglas Fir color, some blue/green/grey mineral coloration, and some checking, splits, and cracks

Material #: TB-DF

Real wood. Real stories.

Leverage Mission Bell's expertise to recommend, source and give this Reclaimed Wood a second life.

408.778.2036
reclaimedwood@missionbell.com



© Copyright Mission Bell 2016